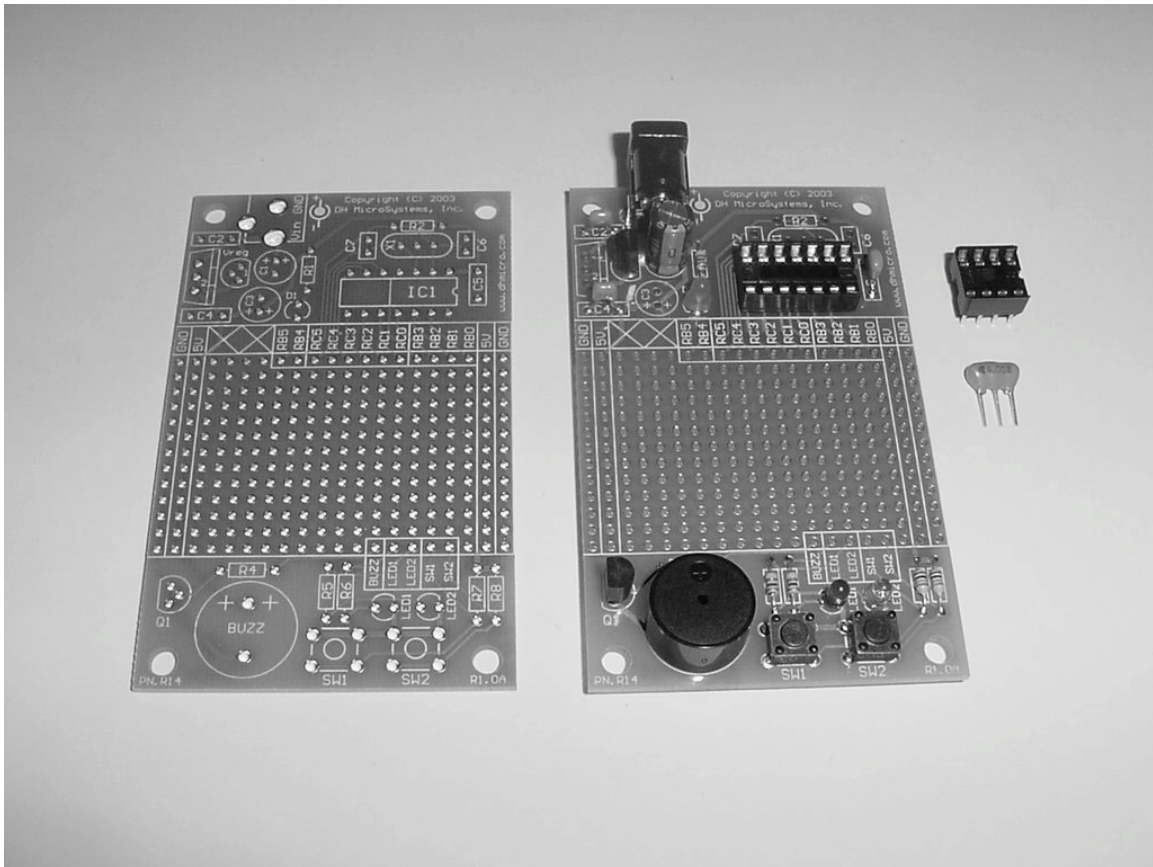


# Rapid14™ PIC Prototyping PCB User Manual

# DHMicro.com



# DHMP

DH MicroSystems, Inc.

Copyright © 2003 DH MicroSystems, Inc.

All trademarks mentioned in this document are the property of their respective companies.

# Rapid14™ PIC Prototyping PCB User Manual

## Description

This is a PCB designed to facilitate the rapid prototyping of a device based on an 14 pin MicroChip PIC microcontroller. It also serves as a larger prototyping board for an 8 pin Microchip PIC microcontroller.

To allow users to focus on their application, we take care of key housekeeping tasks associated with a microcontroller-based device. To this end, our PCB features several power supply options, a 14 pin footprint for the microcontroller, and several oscillator options.

Users can construct their application circuit in our generous a generous prototyping area with space available for several IC's and /or numerous discrete components.

To further simplify the construction of prototype PIC devices, on the end of the PCB opposite from the microcontroller and power supply we have provided several common I/O components. There are 2 push buttons, 2 LEDs, and a buzzer that can be configured for use with the prototype application.

This board is constructed as a 2-layer through-hole board with clearly marked components on its silkscreen layer, and ample space between components so population of the board can be done by anyone with basic soldering skills.

## Additional Resources

Numerous sources of information are available for both beginning and advanced users.

Microchip Technology Inc. manufactures the PIC microcontroller line. Their website can be found at [www.microchip.com](http://www.microchip.com). It contains datasheets for all of their microcontrollers, app-notes, and code samples for a variety of applications.

Another excellent on-line resource for Microchip PIC development is the Piclist at [www.piclist.com](http://www.piclist.com). It contains project info, code examples, and links to PIC related sites.

Beginner users might also consider the books published by Square 1 Electronics. They can be found at [www.sq-1.com](http://www.sq-1.com).

This list is by no means comprehensive. Many other excellent websites and publications are available and this list is only intended as a starting point for the beginner.

## Features

### General:

- Overall board dimensions 2.00" x 3.25".
- PCB is a 2-layer board with solder masks on both sides and a silk screen graphic.
- 16 x 13 pin prototyping area (208 pins total).
- Power and GND bus lines run the length of the prototyping area on both sides (not included in proto total pin count).
- All 12 microcontroller port pins brought out to a clearly labeled strip at the top of the proto area.
- 4 corner mounting holes.

### Microprocessor:

- Compatible with all MicroChip PIC 14 and 8 pin DIP packaged microprocessors.
- 14 pin: PIC16C505, PIC16F630, 676,
- 8 pin: PIC12C508, 509, 671, 672, PIC12E518, 519, 673, 674, PIC12F629, 675 (and perhaps others).

### Oscillator Options:

- Crystal or ceramic resonator with external capacitors (DC-20MHz).
- Ceramic resonator with internal capacitors (DC-20MHz).
- RC oscillator.
- Internal oscillator

### Power Supply Options:

- Footprints provided for either TO-92 or TO-220 voltage regulators.
- Footprint provided for DC power receptacle.
- Power-on LED.

### User I/O Options:

- 2 push buttons.
- 2 LEDs.
- Piezo buzzer.

## Requirements

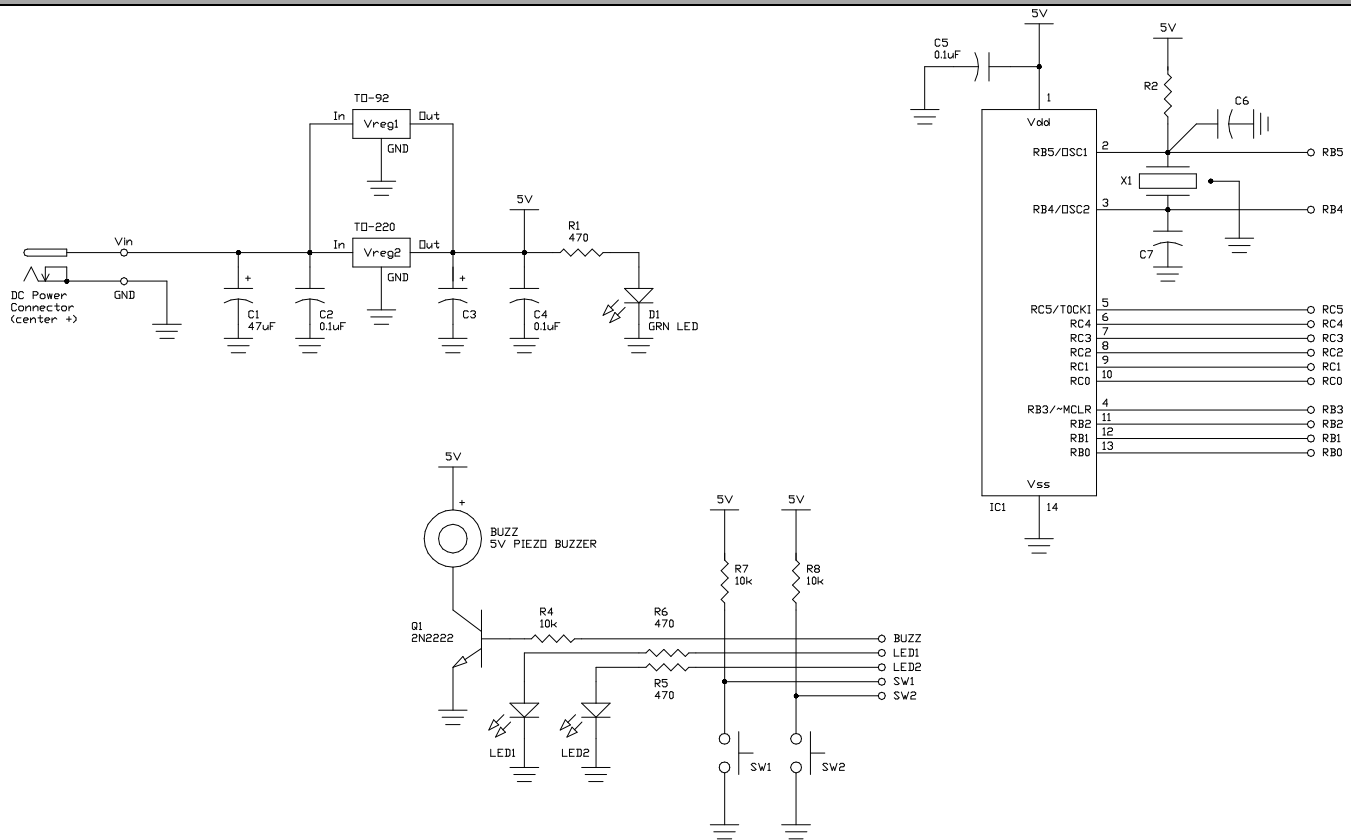
In order to assemble and use this board, a user needs to have basic electronic tools and some skill in their usage, a 14 or 8 pin PIC microcontroller and the tools required to write code and program the executable file onto the controller. Additionally, if this board was purchased as a bare PCB, then a number of discrete components are also required to stock it appropriately for use.

**Copyright © 2003 DH MicroSystems, Inc.**

All trademarks mentioned in this document are the property of their respective companies.

# Rapid14™ PIC Prototyping PCB User Manual

## Board Schematic



## Construction

### Partlist:

If you purchased this as a kit, then it included the following components:

- Printed circuit board
- IC1-14 and 8 pin sockets
- X1-4MHz ceramic resonator
- VREG1-78L05 voltage regulator (TO-92)
- DC power receptacle
- C1-47 $\mu$ F electrolytic capacitor
- C2, C4, and C5-0.1 $\mu$ F capacitors
- R1-470 Ohm, 1/8W, resistor
- D2-Green LED

If it was purchased as a kit including parts to complete the user I/O circuitry then it also included:

- SW1 and SW2-tactile push-button switches
- LED1 and LED2-red and yellow LEDs
- BUZZ-5V piezo buzzer
- Q1-2N2222 (TO-92) NPN transistor
- R4, R7, and R8-10k Ohm, 1/8W, resistors
- R5 and R6-470 Ohm, 1/8W, resistors

Note: parts are *not* provided to fill all PCB footprints. The user should stock the board appropriately according to the requirements of any particular design (see construction options discussed on the next page).

**Copyright © 2003 DH MicroSystems, Inc.**

All trademarks mentioned in this document are the property of their respective companies.

# Rapid14™ PIC Prototyping PCB User Manual

## Construction (Cont.)

### Microcontroller Options:

This board will support any 14 or 8 pin DIP packaged Microchip PIC microcontroller. The pin descriptions depicted in the schematic on the previous page and on our PCBs represent only basic port definitions for each pin. Refer to the Microchip datasheet for all the features and alternate pin definitions for the microcontroller that you select for use.

### Oscillator Options:

Several oscillator options are available with this board: ceramic resonator, crystal oscillator, RC oscillator, and internal oscillator (kits ship with a 4MHz ceramic resonator). Pertinent oscillator parts are R2, C6, C7, and X1. Select these components per instructions found in Microchip datasheets for the microcontroller that you select for use.

### Power Supply Options:

This board will support several different voltage regulators in both TO-92 and TO-220 packages (kits ship with a TO-92 78L05) Note: install only one voltage regulator when assembling your board.

Keep in mind the current requirements of your circuitry plus the microcontroller when you are selecting an appropriate voltage regulator.

Depending on the requirements for the regulator you select, C1, C2, C3, and C4 may or may not be required and their values will vary. Refer to the

manufacturers datasheet for your regulator you select for recommendations.

A wall adapter can provide power when the DC power receptacle is installed. A 2.1mm ID, 5MM OD DC power plug with a positive center conductor is required. A bench supply can also be used; in this case omit the power receptacle and solder in red and black wires to the pins labeled **Vin** and **GND** respectively. Voltage should be 7.5-12VDC.

A power-on LED may be installed by stocking R1 and D1 (a green LED).

### Assembly:

Stock parts in their appropriate locations, paying attention to proper component alignment. For 14 pin PIC, solder the 14 pin socket in place; for 8 pin PIC solder in the 8 pin socket aligned with pin 1 (note: for 8 pin PIC only RB0-RB5 (same as GP0-GP5 pins on **Rapid8** PCB) pins are active to the proto area). Solder components to the PCB with a low wattage soldering iron. Lastly, trim off excess leads and clean off flux residue (if required) with an appropriate solvent.

Construct your own circuitry in the open prototyping area. Microcontroller pins are accessed through the labeled strip of pins at the top of the proto area; I/O components are accessed through the labeled pins at the bottom. 5V and GND for your circuit is available on both left and right sides of the proto area in labeled strips.

## Contact Us

We maintain a website where you can get information on our products, obtain literature, and download support files. Visit us online at:

***www.dhmicro.com***

Email your technical support questions to **support@dhmicro.com**. We try to respond to your questions within an hour if it is received Monday through Friday between the hours of 8am to 5pm (Mountain Time).

For sales questions or to place an order, direct your emails to **sales@dhmicro.com**. Refer to the order form and price list available on our website for product pricing, shipping rates, payment instructions, and for other info we need to complete your order.

Our mailing address:

**DH MicroSystems, Inc.**  
P.O. Box 2272  
Pocatello, ID 83206-2272

**Disclaimer: DH MicroSystems, Inc. reserves the right to modify its products or literature, or to discontinue any product at any time without prior notice. The customer is responsible for determining the suitability of any device for any application developed using DH MicroSystems, Inc. components.**

**Copyright © 2003 DH MicroSystems, Inc.**

All trademarks mentioned in this document are the property of their respective companies.